

T8 SERIES

COMMERCIAL INDOOR LIGHTING

WESTGATE
THE FUTURE IS HERE...AND IT'S QUITE BRIGHT!

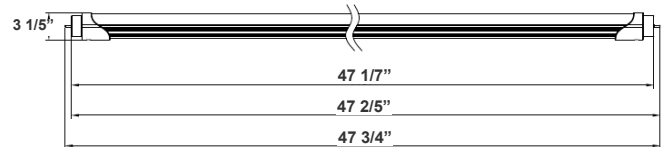
- T8-EZ6-AHL-4FT-18W-30K-F
- T8-EZ6-AHL-4FT-18W-35K-F
- T8-EZ6-AHL-4FT-18W-40K-F
- T8-EZ6-AHL-4FT-18W-50K-F

Customer Name: _____

Project Name: _____

Note: _____

Type: _____



Aluminum T8 Tube lamps switches from fluorescent tubes to LED, giving more cost efficiency by providing the same amount of lumen output with less energy consumption. Type B is designed for different projects. The LED tube offers a soft and bright light distribution.

47 3/4"(L) X 3 1/5" (D)

Features

- Type A + B (Dual UL)
- Type A: With Existing Ballast - UL No. E366061
- Type B: Ballast Override (AC Direct), Connect One End or Both Ends (Dual Function) - UL No. E342884
- 5-Year Warranty
- Frosted PC Lens

Technical Specifications

Electrical:

- Voltage: 120-277V; 50/60Hz AC
- Power Factor: >0.90
- THD: <20%
- Wattage: 18W
- Efficacy: 110 LPW

Lighting:

- No Mercury And Virtually No UV Emission.
- Total Lumens: 1980LM
- Color Temperatures: 3000K/3500/4000K/5000K
- Color Rendering Index: CRI ≥ 80
- Beam Angle: 120°
- Rated life: 50,000 Hrs

Mechanical:

- Base Type: G13
- Frosted PC Lens
- Aluminum Housing & PC lens
- Ambient Operating Temperature: -13°F to 113°F
- IP Rating: IP20 (Indoor)

Applications:

- Aluminum T8 Tube lamps switches from fluorescent tubes to LED, giving more cost efficiency by providing the same amount of lumen output with less energy consumption. Type B is designed for different projects. The LED tube offers a soft and bright light distribution.

Other Models:

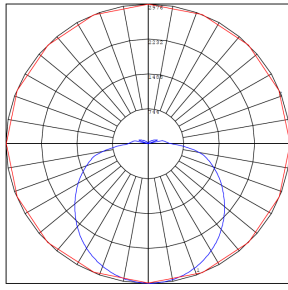
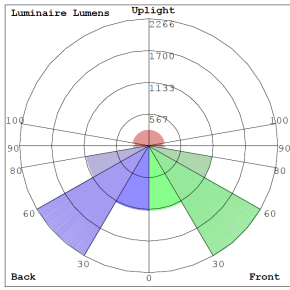
- 18W | 2070LM | T8-EZ6-AHL-2FT-18W-30K-C
- 18W | 2070LM | T8-EZ6-AHL-2FT-18W-35K-C
- 18W | 2070LM | T8-EZ6-AHL-2FT-18W-40K-C
- 18W | 2070LM | T8-EZ6-AHL-2FT-18W-50K-C



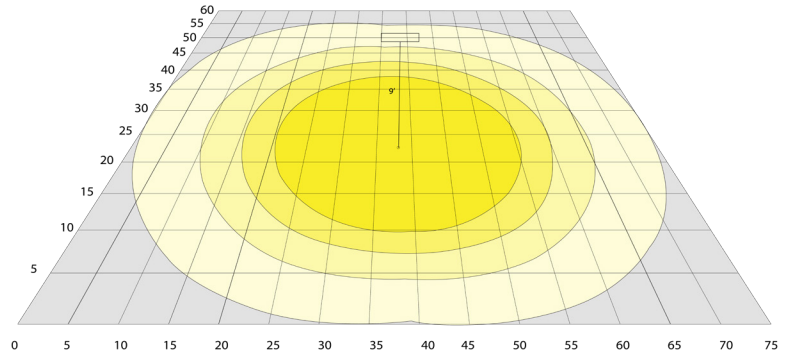
Phone: (877) 805-2252 | Fax: (877) 805-2252
www.westgatemfg.com | www.westgatecontrols.co



Photometrics: T8-EZ6-AHL-4FT-18-F



BUG Rating: B3-U3-G3

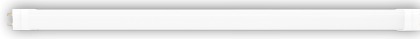


Area 60'x 75' Mounting Height: 9'

Other Views:



Side View



Front View



Socket View

Performance Table: T8-EZ6-AHL-4FT-18-F

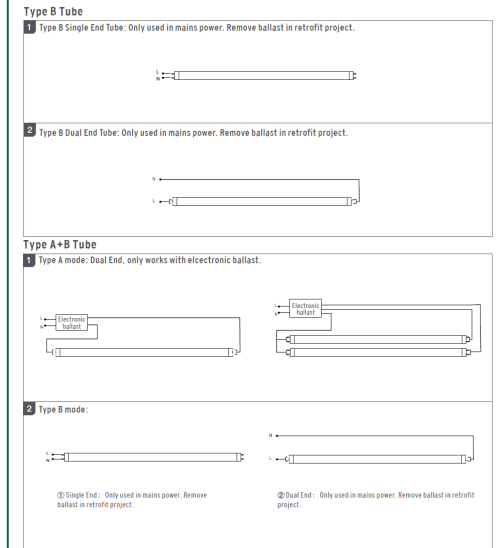
MODEL NO.	Wattage	Voltage	Lumens	Color Temp.	BUG Rating	LPW
T8-EZ6-AHL-4FT-18W-30K-F	18W	120-277V	1980LM	3000K	B3-U3-G1	110
T8-EZ6-AHL-4FT-18W-35K-F	18W	120-277V	1980LM	3500K	B3-U3-G1	110
T8-EZ6-AHL-4FT-18W-40K-F	18W	120-277V	1980LM	4000K	B3-U3-G1	110
T8-EZ6-AHL-4FT-18W-50K-F	18W	120-277V	1980LM	5000K	B3-U3-G1	110

Sample Ordering

Model	Material	Size	Watt	Color Temp.	Lens Type							
T8	-	EZ6	-	AHL	-	4FT	-	18W	-		-	F

30K = 3000K
35K = 3500K
40K = 4000K
50K = 5000K

WIRING DIAGRAM:



Example:

1. T8-EZ6-AHL-4FT-18W-40K-F

(FOR 18W 4000K T8 4FT TUBE LAMP 120-277V)

Other Models: T8-EZ6-AHL-4FT-18W-C (Clear Model)



Close-up View



Side View



Back View